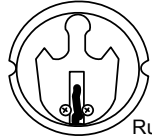




# GG TRIM CYLINDER REQUIREMENTS, PREPARATION & INSTALLATION

## CYLINDER & CAM REQUIREMENTS

Cylinder Requirements:  
Mortise Cylinder 1-1/8"



9000 Models  
Russwin Clover-Leaf Cam

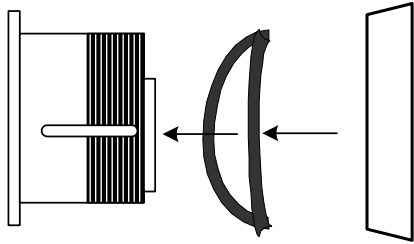


Centurion-PB and  
Centurion-DX Trim:  
Yale-type straight cam

Trim with Classroom  
Function (ANSI F05):  
Adams-Rite -type short  
straight cam



## CYLINDER PREPARATION

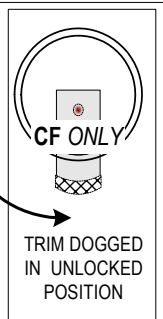


Mortise Cylinder   Flat Spring   Cylinder Collar

Insert mortise cylinder and flat spring into cylinder collar.

## TRIM PREPARATION for CLASSROOM FUNCTION ONLY

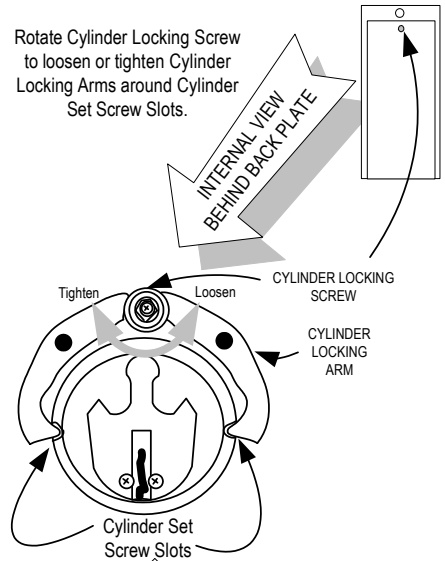
TRIM IN  
LOCKED  
POSITION



TRIM DOGGED  
IN UNLOCKED  
POSITION

Cylinder assembly must be installed with trim  
in unlocked position - tab down (see left).

Rotate Cylinder Locking Screw  
to loosen or tighten Cylinder  
Locking Arms around Cylinder  
Set Screw Slots.



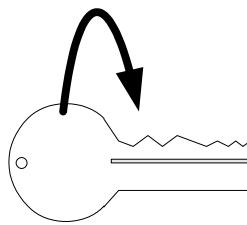
## INTERNAL VIEW OF QUICKSWITCH ASSEMBLY

### NOTE:

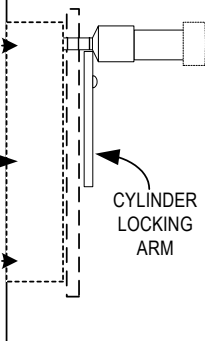
Cylinder is  
held in place  
by Cylinder  
Locking Arms  
seated in  
Cylinder Slots.

## CYLINDER INSTALLATION

Install cylinder assembly into exterior  
escutcheon trim by partially inserting key 1/2  
way into cylinder and rotating cylinder  
clockwise to screw in.



### EXTERIOR ESCUTCHEON TRIM



CYLINDER  
LOCKING  
SCREW

Before Nov 1 2003: #2 Phillips  
After Nov 1 2003: 1/8" Allen key

Insert driver into Locking screw and rotate  
clockwise to lock cylinder in place.  
Jiggle cylinder clockwise/counterclockwise  
to be certain that cylinder locking arms are  
fully seated into cylinder slots.  
REFER TO INTERNAL VIEW ABOVE.



**SECURITECH  
GROUP INC.**  
54-45 44TH STREET  
MASPETH, NY 11378  
(800) 622-LOCK  
(718) 392-9000  
FAX: (718)392-8944