

SECURIGUARD™



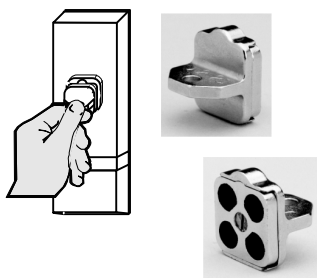
Completely Conceals The
Cylinder & Keyhole

- Specially Encoded Magnetic Key Is Used To Raise Or Lower The Shield
- Cannot Be Opened Or Defeated By Ordinary Magnets
- Shields The Cylinder From Attack By "Krazy Glue" Vandalism Picking Wrenching
- Provides Effective Access Control As A Secondary Lock By Locking Out Regular Keys
- Several Million Magnetic Key Combinations
- Factory Key Duplication Available By Code
- Codes May Be Factory Registered To Restrict Copying - Specific Codes May Be Set-Up For Individual Users
- Keyed Alike Or Keyed Different Available
- Choice Of Finishes: Jet Black Or Clear Aluminum
- Custom Models Available
- No Wiring Or Batteries Required

How Does It Work?

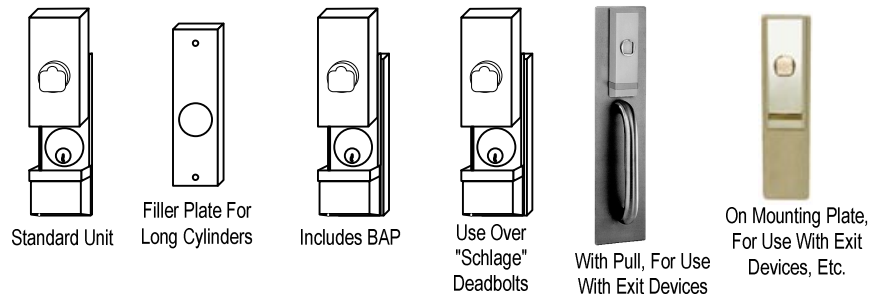
When the "Shield" is locked down, the cylinder is completely concealed.

To Open: Place the magnetic key into the locking bay and slide the shield upward to expose the cylinder. Then you can insert the regular key into the lock and operate as usual. Use the magnetic key to lower the "Shield" again and conceal the cylinder.



MODELS

- 6300** **63BAP** **6305** **6302** **63PP-** **63MP-**



REMOVABLE BAY MODELS

All of the models listed above, as well as custom models, are available with the "Removable Bay Option". This allows changing the combination without removing the Securiguard from the door. To order, change the model designation from "63" to "64".

CUSTOM MODELS

Special Designs Are Available For Use Over Pushbutton Locks, Mortise Lock Trim, Exit Device Trim, Etc. Contact The Factory.

Size

Height: 5-3/4"
Width: 2"
Depth: 1-1/8"

KEYS: 2 furnished. Extras available at any time. Order by key number. Models beginning with "631" or "641" are furnished with 3 keys standard.

DOOR & FRAME PREPARATION:

No Special Prep Required.

HANDING: Not Applicable.

CYLINDER: Fits Over Rim & Mortise Cylinders.

made in u.s.a. j:\!!! binder 2001\5\CAT 6300 v3.vsd\page-1.asd 02/24/02