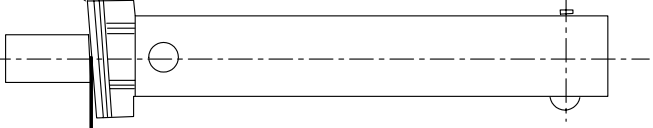


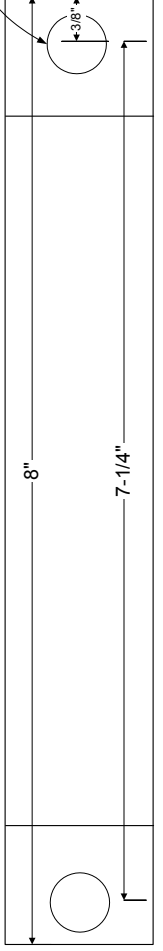
A Note About Templates:
 Any reproduction of this template, via fax, photocopy or digital transmission, renders it **Not To Scale.** 1"

**FLAT TO 1/8" IN 2" FRONT BEVEL
 ADJUST TEMPLATE FOR DOOR BEVEL**



**Mark Horizontal Reference Line 3/8" from C.L. of Mounting Screw Hole
 (top of lock mounting tab - may be same as top of mortise opening)**

CL OF HOLE OF MOUNTING TAB

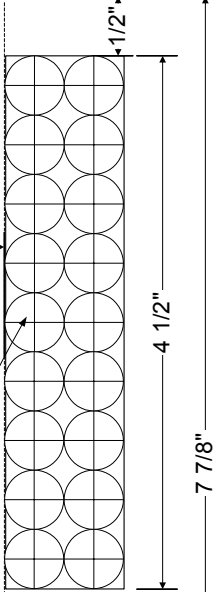


VERTICAL REFERENCE LINE, ADJUST FOR BEVEL OF DOOR

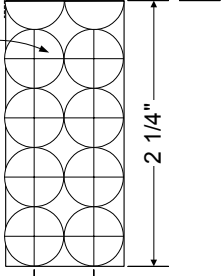
3 7/8"

**PLACE ON INTERIOR OF DOOR.
 THIS SIDE OF TEMPLATE FACES YOU FOR LH/LHR BEVEL DOOR**

**1/2" Holes
 Use chisel to make rectangle.**



**1/2" Holes
 Use chisel to make rectangle.**



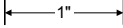
1/2"

TEMPLATE TMP8XTXX-SBO-VC
TO BE USED FOR 8000 TOUCH BAR SERIES AUTOBOLT
 All measurements are from the CL of the door edge
 Adjust all measurements for the door bevel
All holes are on the interior of door ONLY
Strike Prep - Standard 4-7/8"
 Top Of Mortise Opening To Top Of 4-7/8" Strike In Frame: Standard 1-3/16"

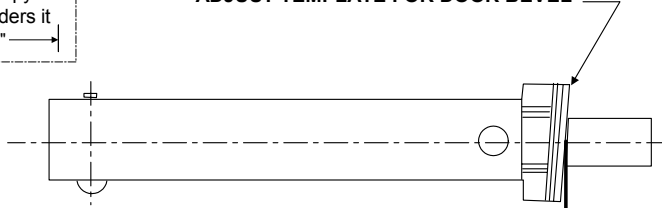
SECURITECH GROUP, INC.
 54-45 44TH STREET MASPETH, NY 11378
 (718)392-9000 FAX: (718)392-8944

A Note About Templates:

Any reproduction of this template, via fax, photocopy or digital transmission, renders it **Not To Scale.**

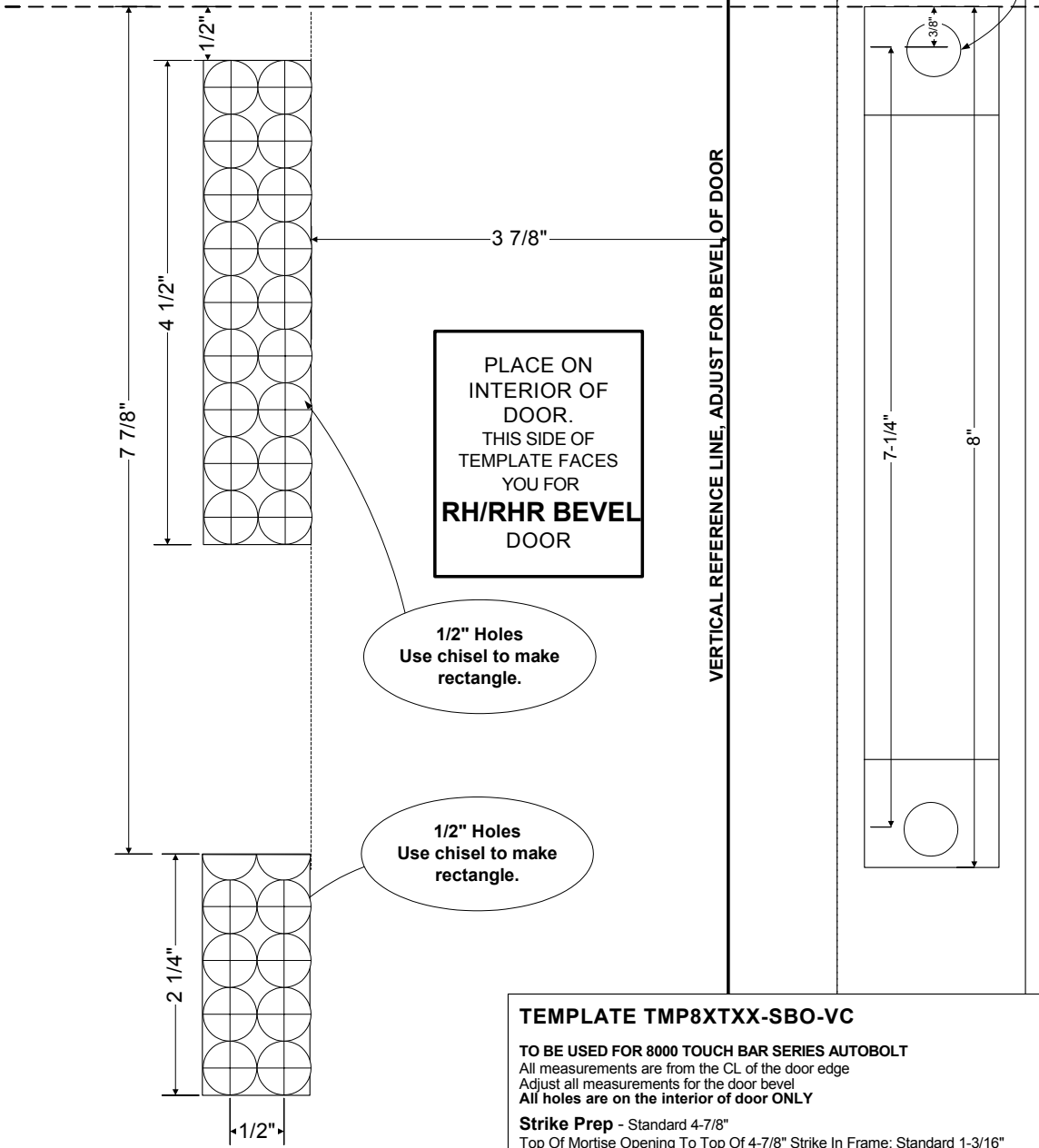


**FLAT TO 1/8" IN 2" FRONT BEVEL
ADJUST TEMPLATE FOR DOOR BEVEL**



**Mark Horizontal Reference Line 3/8" from C.L. of Mounting Screw Hole
(top of lock mounting tab - may be same as top of mortise opening)**

**CL OF HOLE OF
MOUNTING TAB**



**PLACE ON
INTERIOR OF
DOOR.
THIS SIDE OF
TEMPLATE FACES
YOU FOR
RH/RHR BEVEL
DOOR**

**1/2" Holes
Use chisel to make
rectangle.**

**1/2" Holes
Use chisel to make
rectangle.**

TEMPLATE TMP8XTXX-SBO-VC
TO BE USED FOR 8000 TOUCH BAR SERIES AUTOBOLT
All measurements are from the CL of the door edge
Adjust all measurements for the door bevel
All holes are on the interior of door ONLY
Strike Prep - Standard 4-7/8"
Top Of Mortise Opening To Top Of 4-7/8" Strike In Frame: Standard 1-3/16"