

Introduction To Installing The MP4900 Panic Exit Police Lock

“A little bit of knowledge before getting to the door can go along way towards simplifying the installation”

Bob Hart
All-Hart Locksmith



V1.0

MP Panic Exit Police Lock

MP4900 Series

Basic Info

- ◆ Single & Double Door Models
- ◆ Battery or Direct Power Alarms
- ◆ Manual, Self-Locking & Fire-Rated Models
- ◆ Exit-Only or Keyed Entry Models



2

Review Of March 2004 Installation

- ◆ Single Door
- ◆ Fire-Rated
- ◆ Battery Operated Alarm
- ◆ No Exterior Operation



3

MP4900: Why?

Multi-Point Exit Locks Provide A Higher Level Of Protection Against Forced Entry Than Any Other Exit Lock



4

MP4900: How?

Steel Deadbolts Project One Inch From The Door Into The Frame & Floor At Up To Four Locations



5

MP4900: What's Different To Install?

Greater Protection Requires A Different Installation Than A Regular Exit Lock



- ◆ More Than Just Fastening The Lock To The Door And Mounting A Strike On The Frame
- ◆ Prepare For Drilling Into The Frame, Header & Saddle Or Floor



6

MP4900: Effectiveness

The Bolts
In The
Frame
Keep
Burglars
Out!

Actual Photos Of Thwarted Break-Ins



How To Prepare For An Installation

Understanding
The
Requirements
Will Speed
The
Installation

- ◆ The Bracket Location & Thru-Bolting Are Critical In Preventing Forced Entries
- ◆ Proper Bolt Projection Into The Frame & Saddle (Or Floor) Gives Maximum Protection



Tools Required: Suggested List

- ◆ Impact drill to drill concrete out of frame
- ◆ Commercial drill for drilling holes in frame, door & threshold
- ◆ Jigsaw with metal blades to cut main strike box after drilling
- ◆ Punch & hammer to help keep drill bit from drifting
- ◆ Broom & dustpan
- ◆ Drill bits: *important to have several of each in case they get dull or broken*
- ◆ Metal
- ◆ 5/16, 7/16, 7/8, 1/2
- ◆ 1/4, 3/4
- ◆ 1/8
- ◆ Concrete
- ◆ 1/4
- ◆ 5/8
- ◆ 7/8
- ◆ 3/4 hole saw for frame-top strike & threshold
- ◆ Wrenches and socket set to tighten nuts on bolts
- ◆ Pencil and permanent marker, straight edge for line drawing
- ◆ Flat metal file
- ◆ Chisel and/or pick to chip concrete
- ◆ Level
- ◆ Phillips screwdriver or bits
- ◆ Snips-to cut weather stripping in retrofits

Check The Door Operation Before You Begin

If The Door Does
Not Swing Freely
In The Frame,
You Will Not
Have A Smooth
Operating Multi-
Point Exit Lock

- ◆ A Door Which Rubs Against The Frame Or Floor Will Cause Problems: Correct Before Beginning The Installation

Special Requirements By Locking Method

Self-Locking &
Fire-Rated
Models:
A Door Closer Is
Required

- ◆ Spring Hinges Can Be Used On Infrequently Used Doors

Check The Alarm Contact Location

If the contact is
located between
4" and 9" from the
doorstop, it will
need to be moved
away from the top
bracket



- ◆ On pairs of doors, 7" clearance from the edge is required

Prepare The Door For The Installation

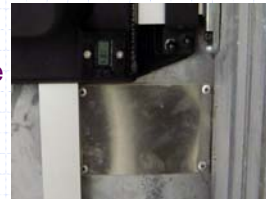
Remove Old Exit Device, Exit Lock And Any Other Locking Or Fastening Devices

Remember The Code
– No Slide Bolts On Emergency Exit Doors!



Prepare To Patch The Door

Have Small Stainless Steel Plates With You To Cover Any Oversize Holes;
Use Sexbolts to cover smaller holes



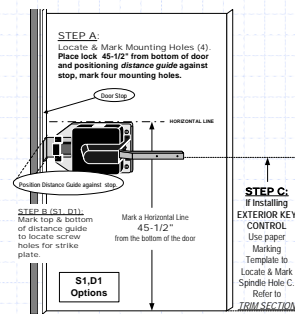
Alarm Preparation Information:

Mortise cylinders with straight Yale cams are required



Mark The Horizontal Marking Line

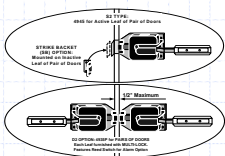
The first step in the installation is to mark a line at 45-1/2" from the bottom of the door (NOT the floor)



Mark The Lock Mounting Plate Holes

Use The Lock Mounting Plate To Mark Your Holes

It is shipped from the factory with a depth guide to line-up with the frame



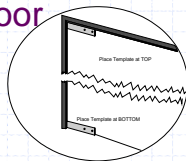
Mark The Main Bolt Strike Plate On The Frame

You Will Have To Chop Out An Area On The Frame For The Keeper Box



Mark The Top & Bottom Thru-Bolt Locations

Brackets Should Be Installed As Close To The Top & Bottom Of The Door As Possible



Install The Lock

It is thru-bolted with an embossed anti-pry plate



Do I Need To Adjust The Lock?

The Exit Lock Is Factory Installed On The Mounting Plate; Each lock is tested before shipping

The lock body is not field accessible



Connect The Rods To The Rod Holders

Self-Locking Is Fastened With A Special Pin; Manual Locking Models Use Nuts



Self-Locking Units: Special Item To Watch

Self-Locking Units Have A Trigger: When the trigger hits the frame, the bolts jump out

The trigger might need to be adjusted if damaged



Drill The Header

Use putty or lipstick on the top of the bolt; This marks the center for the hole in the header and floor

Ask your wife or girlfriend for old, unwanted lipstick and keep it in your toolbox!

Drill The Saddle Or Floor

Larger hole required for the dustproof strike

- ◆ Drill up using masonry bits
- ◆ Use caulking to hold in place



Adjust The Bottom Bolt If Needed

Makes up for extra-large gap between bottom of door and the floor

- ◆ The bottom bolt can be adjusted via loosening a locknut on manual locking models or by adjusting the connection on self-relock models



Install The Stationary Bolt

Installed by drilling a hole in the edge of the door; Hinge-edge bolts are not connected to the exit lock mechanism

- ◆ Movement of the door swings the bolt away from the frame



Run The Armored Cable Across The Door

Same method for battery-powered or direct power alarm

- ◆ Use clips provided



Connect The Wires To The Alarm

Directly to Battery Alarm;

Into Keyswitch Box for Direct Power Alarm

- ◆ Connect 2 wires: colors as per instructions



Direct Power Alarm Installation

Run Armored Cable From Keyswitch Box To Direct Power Alarm

- ◆ Mount direct power alarm above hinge side of door; 110v AC power will have to be run into the alarm power supply



Install Cylinder Into Alarm

Mortise cylinder with straight Yale cam required

- ◆ The locking ring and mounting plate hold the cylinder in place



Added Security Options

- ◆ **Counter:**
Number automatically advances each time the door opens for accountability



- ◆ **Door Monitor Switch:**
Provides signal that door is in the frame (in addition to regular bolts projected signal)



Added Security Options

- ◆ **FSP:**
Stainless Steel Underlayer & Additional Bracket To Reinforce Door Against Prying
- ◆ **Exterior Keyed Entry via Thumbturn (manual models) or Lever Trim (self-locking models) available**



Other Options

- ◆ **Extended Paddle:**
Used where more coverage on door required by code
- ◆ **Channel Deflector:**
Used to meet California code or to protect lower channel against abuse



Need More Support?



- ◆ Please contact Securitech
- ◆ 800.622.5625
- ◆ help@securitech.com
- ◆ www.securitech.com